



Firmware Update Guide

V1.0



For ONAGOfly Series Smart Nano Drone

Preparation:

Before you update the firmware, please prepare these tools below:

1. PC x 1 (For Win XP , Win7 32/64bit with .netframework4.0 installed)
2. Micro SD card(Max capacity 64GB, Class 10) x 1
3. USB to Micro-USB Cable x 1
4. Find and download the firmware kit from bbs.onagofly.org and unzip it. The kit includes these files as below:
 - a. ONAGOfly0630.bin
 - b. ONAGOfly0630.ong
 - c. ONAGOflySetup0630.msi

Step I : UPDATE YOUR FLIGHT CONTROL SYSTEM.

- a. Install ONAGOflySetup0630.msi Utility on your PC, and there is an “ONAGOflyDriver” icon on your Windows Desktop(Figure 1) after the installation.



Figure 1

- b. Connect your PC and your Drone with the USB to Micro-USB Cable.



Figure 2

- c. Run ONAGOflyDriver Utility, and press the “load” button(figure3) to load the “ONAGOfly0630.ong” file.

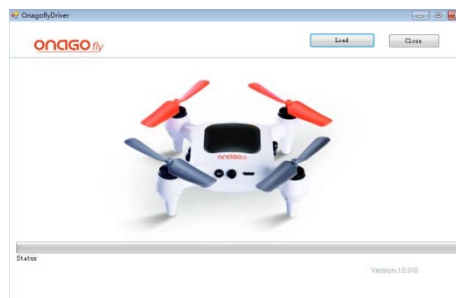


Figure 3

- d. You need to re-plug the cable on the board and click “OK” to wait for the update(Figure 4).

It will take about 40 seconds for the update process(Please don't shut down your computer during the update).



Figure4

- e. Click "OK" button, and congratulations! Your flight control firmware has been upgraded to the latest version(Figure 5).



Figure5

Step II : UPDATE YOUR CAMERA SYSTEM.

- a. Format your Micro-SD Card to FAT or FAT-32 format, and load the "ONAGOfly0630.bin" file into the Micro-SD Card.
- b. Insert the Micro-SD Card with "ONAGOfly0630.bin" loaded into the Drone.
- c. Power it on. Different from the normal power on process, there are no beep and no LED light blink during the update. The update will continue for 40 seconds until the LED lights turn on. Congratulations! Your camera system firmware has been upgraded to the latest version.
- d. Power it off and remove the Micro-SD card. If you want to use the current Micro-SD on ONAGOfly, please remember to delete the ONAGOfly.bin file or format the card on your computer first.

FAQ

1. **Q:** Why my computer can't install ONAGOflyDriver Utility?

A: ONAGOflyDriver Utility support Microsoft Win XP and Win7 32/64bit, and it don't support Win8 32/64bit, Win10 and Macbook now. You can download and install Microsoft .NET Framework 4 first(<https://www.microsoft.com/en-us/download/details.aspx?id=17851>), and then install ONAGOflyDriver Utility.

2. **Q:** Why ONAGOflyDriver Utility can't find ONAGOfly after I install ONAGOflyDriver Utility and connect ONAGOfly with USB to Micro-USB Cable?

A: You can find ONAGOfly in Windows Device Management if you successfully install the ONAGOflyDriver Utility. If you still can't find the device, please check or change "the USB to Micro-USB cable" and try again.

3. **Q:** When I update the "ONAGOfly.ong" file, the computer is down suddenly and the upgraded process is interrupted. What can I do for it?

A: You can restart the computer and restart the upgraded process.

4. **Q:** Do I need to update the Application in my mobile device after I update the firmware?

A: Yes, we recommend the user to update the Application to the latest version too.

The content is subject to change.

If you have any questions for the document, please send message to support@onagofly.com.

@2016 ONAGOfly. All Rights Reserved.